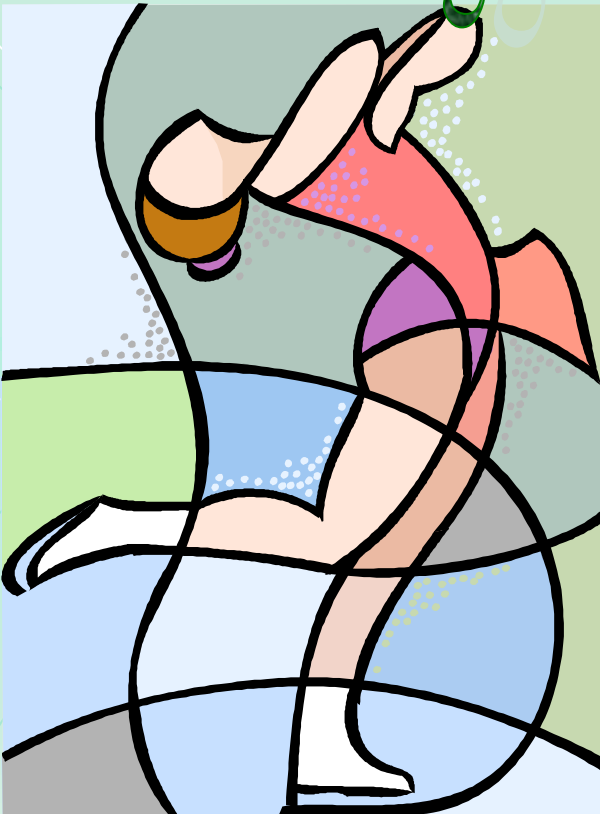


PowerSkates

Advanced Figure Skating Camp



For skill levels Basic 8 through Intermediate and Advanced.

Our camp includes:
On-Ice training in jumps, spins, moves in the field, foot-work, artistry in movement & choreography.
Off-ice, skaters will participate in dance and conditioning classes, as well as video instruction.

Monday - Friday 8:00am - 3:30 pm Ages 8+
July 19 - 23 Deadline for registration: July 1 (add \$15 late fee)
Aug. 9 - 13 Deadline for registration: July 20 (add \$15 late fee)

Resident Fee: \$285.00/session

Non-Resident: \$300.00/session

*For more information regarding the Advanced Camps, please contact Sigrid
Phone: (301) 932-4348 Email: sberge@capitalclubhouse.com*

Before and After Care available to registered skaters for an additional fee.

Before Care 7-8am: \$30/wk or \$10/day
After Care 4-6pm: \$30/wk or \$10/day
Before & After Care: \$50/wk or \$15/day



Managed by
Rink Management Services Corporation
the most trusted name in ice rinks

FOR MORE INFORMATION CALL 301-932-4348
www.capitalclubhouse.com

Capital Clubhouse is located at 3033 Waldorf Marketplace Waldorf, MD 20603